



COMMUNITY REPORT
FY 2023

A Message From Archbishop Mitchell T. Rozanski

ARCHBISHOP OF ST. LOUIS



Grace and peace to you in the name of our Lord Jesus Christ!

I write to you today with a heart filled with gratitude and hope as we reflect on the vital work of Catholic Charities of the Archdiocese of St. Louis. In this letter, I wish to underscore the importance of their mission and the profound impact they continue to make in our communities.

Catholic Charities, through its unwavering commitment to bringing the healing, help, and hope of Jesus Christ to those in need, embodies the essence of our call as disciples of Christ. With a compassionate and caring presence, they have become a beacon of light for individuals and families facing various challenges in their lives. Through their tireless efforts, they create a communion of care that not only addresses immediate needs but also fosters community renewal and social outreach.

It is inspiring to witness how Catholic Charities connects with people, parishes, and ministries across every square mile of our Archdiocese, uniting us in a meaningful communion of care. Their dedication to strengthening Catholic and ministerial identity, with evangelization as the ultimate goal, is commendable. By aligning themselves more closely with the Archdiocese, they serve as a visible catalyst for social outreach, enriching the fabric of our communities and bringing us closer to the realization of God's kingdom on earth.

As we look to the future, I am excited about the possibilities that lie ahead. Catholic Charities is poised to serve the Archdiocese in new and innovative ways, expanding its reach and impact. Together, we can work towards growing the

number of lives touched by their ministry, ensuring that no one in our community is left behind. With an increased presence in every corner of our Archdiocese, Catholic Charities will continue to be a beacon of hope, a source of comfort, and a symbol of Christ's love for all.

I urge you, my dear brothers and sisters, to join me in supporting the invaluable work of Catholic Charities. Let us pray for their continued success and offer whatever assistance we can, knowing that our contributions, no matter how small, can make a difference in the lives of those in need.

May God bless Catholic Charities of the Archdiocese of St. Louis abundantly, and may He grant us the grace to be instruments of His peace and mercy in our world today.

With heartfelt gratitude and prayers,

A handwritten signature in black ink that reads "Mitchell T. Rozanski". The signature is written in a cursive, flowing style.

Most Reverend Mitchell T. Rozanski
Archbishop of St. Louis

A Message From Dr. Jared H. Bryson

PRESIDENT & CEO



Dear Community Members,

The VISION of Catholic Charities of the Archdiocese of St. Louis is to be a premier leader in community renewal and a visible catalyst for social outreach by connecting with people, parishes, and ministries committed to a meaningful communion of care to those in need across every square mile of the Archdiocese of St. Louis.

As we reflect on the past year, I am filled with gratitude for your unwavering support of Catholic Charities of the Archdiocese of St. Louis. Your generosity has allowed us to continue our vital mission of bringing the healing, help, and hope of Jesus Christ to those in need with a compassionate, caring presence.

Since our inception in 1912, Catholic Charities has been committed to serving our community, and I am proud to say that this commitment remains as strong as ever. Over the past year, despite numerous challenges, we have continued to provide essential services to individuals and families across the Archdiocese. From affordable housing to disaster services, mental health and substance use support to workforce development and community education, Catholic Charities has been at the forefront of addressing the growing human needs in our communities.

In response to Archbishop Rozanski's call to action, we have redoubled our efforts to expand our reach and impact. By collaborating with the vicariates and working closely with parishes throughout the 11 counties in the Archdiocese, we are striving to extend our services to those who need them most. Through these partnerships, we aim to not only meet the immediate needs of individuals and families but also

to empower them to build better lives for themselves and their communities.

I would like to express my heartfelt thanks to Archbishop Rozanski for his continued support of Catholic Charities, as well as to our dedicated Board of Directors for their tireless efforts. Additionally, I am deeply grateful to our senior leadership team and co-workers for their hard work and dedication in advancing our mission.

As we look to the future, I am confident that, together, we can continue to make a meaningful difference in the lives of those we serve. Your ongoing support is essential to our success, and I am truly grateful for your partnership in this important work.

Peace.

A handwritten signature in black ink that reads "Jared H. Bryson". The signature is written in a cursive, flowing style.

Jared H. Bryson, MDiv, DMin
President
Catholic Charities of the Archdiocese of St. Louis

A Message From Deborah Vogt

BOARD CHAIR



Dear Friends of Catholic Charities,

As we reflect on the past year and the impact we have collectively made in our community, I am filled with gratitude and admiration for the dedication and compassion that define our family of ministries at Catholic Charities. It is my honor to share with you our Community Impact Report, highlighting the values and vision that guide our work across the entire Archdiocese of St. Louis.

At the heart of everything we do lies a steadfast commitment to upholding the dignity of every individual we serve. Guided by this and the other values of hospitality, service, excellence, compassion, and joy, we strive to reach those in need with open arms and open hearts. These values not only shape our actions but also inspire us to create a more inclusive and supportive community for all.

I am privileged to work alongside an incredible team of professionals who serve with me on the Board and share in this mission wholeheartedly. Together, we are united in our dedication to serving others and making a meaningful difference in the lives of those we encounter. I extend my deepest appreciation to each and every one of our staff members, volunteers, donors, and partners for their unwavering commitment to our shared cause.

I am particularly grateful for the leadership of Jared Bryson, our President and CEO, whose vision and focused approach have propelled our ministry forward with grace and determination. Jared's deep Catholic faith and unwavering dedication to our mission have been instrumental in guiding us through challenges and opportunities alike. Under his guidance, we are moving into the future with renewed purpose and a commitment to serving all who need it most.

One of the key aspects of Jared's vision is to bring a communion of care to our parishes, fostering vibrant, caring communities of healing, help, and hope. Through this initiative, we aim to extend our reach and deepen our impact by engaging with local communities in meaningful ways. Together, we can create a network of support that uplifts and empowers individuals and families facing adversity.

As we look ahead to the future, I am filled with optimism and excitement for the possibilities that lie ahead. With your continued support and generosity, we can build upon our foundation of values and vision to create a brighter, more compassionate future for all.

Thank you for being an integral part of our Catholic Charities family. Together, we can continue to make a profound and lasting impact on the lives of those we serve.

With gratitude and blessings,

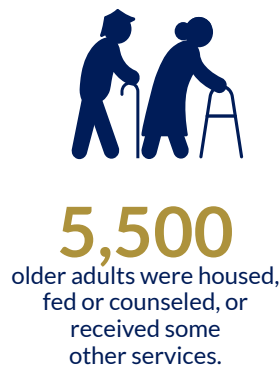
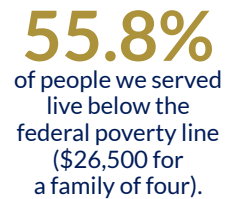
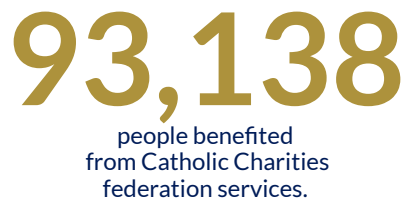
Deborah M. Vogt
Board Chair

An Impact Snapshot

Thanks to you, Catholic Charities of the Archdiocese of St. Louis is one of the largest social services providers in the metro area and Missouri, providing healing, help, and hope to people when they are most vulnerable and in need.

Catholic Charities has been helping people in need since 1912. Organized today as a family of ministries, we serve the 11 counties of the Archdiocese of St. Louis.

Below find our one ministry impact snapshot, though by no means meant to reflect every service we provide, illustrates our two-pronged approach to care: first providing for urgent basic needs and then addressing longer-term barriers to economic stability.



Impact figures are measured by calendar year. The above reflects the last calendar-year figures available, 2022.

Catholic Charities of the Archdiocese of St. Louis

Disaster Relief

On July 25, 2022, the St. Louis area experienced historic rainfall over a ten-hour period that heavily impacted St. Louis City, St. Louis County, and St. Charles County. Catholic Charities of the Archdiocese of St. Louis (CCSTL) has been working to provide resources and relief to those who were impacted by the flood by providing disaster case management services through a Disaster Case Management Program which has been funded through a grant the Missouri State Emergency Management Agency secured through FEMA. We have partnered with the Salvation Army as the two provider agencies for the grant and are working with the St. Louis COAD (Community Organizations Active in Disaster) to help those who were impacted by the flood achieve their recovery.

For 6 weeks, during November and December of 2023, we were able to partner with AmeriCorps as they provided 10 of their service people to come to St. Louis and work with us on our flood recovery. They helped provide labor for cleaning up basements, laying flooring, hanging drywalling, and many other tasks. CCSTL was able to meet the needs of 10 of our clients through the partnership with AmeriCorps. As we get further away from when the flooding happened people continue to need assistance with their personal recovery from the flooding. The State Emergency Management Agency applied for and received a no-cost extension of the Disaster Case Management Program through FEMA which will enable CCSTL to continue providing services for this recovery into the spring of 2025.



SEEK24

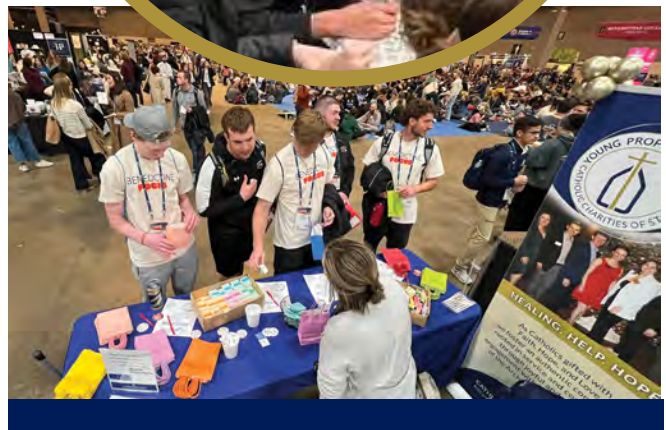
The SEEK24 Conference put on by the Fellowship of Catholic University Students (FOCUS), gathers college students and adults from across the country and internationally for talks, prayer, and fellowship to equip them with the tools to become effective witnesses to the Gospel. Archbishop Mitchell T. Rozanski celebrated the opening Mass of the SEEK24 conference on January 1. He shared, “God has given to us the great privilege to participate in this salvation history, to be instruments of salvation in the world. God wants to be part of our lives. He wants to be ALL of our lives.” The theme of this year’s SEEK conference was “Be the light,” inspired by the words of St. John Paul II during his 1999 visit to St. Louis: “You are children of the light! You belong to Christ, and He has called you by name.”

The Catholic Charities Young Professionals had the opportunity to manage the Catholic Charities of the Archdiocese of St. Louis booth and Catholic Charities sponsorship of the conference allowed us to have a video shown about our ministry at the beginning of one of the breakout sessions. The Young Professionals were able to connect with event attendees through the service projects at their booth, photos with Pope Francis, and connection through conversation.

Together, we helped serve the local community by creating:

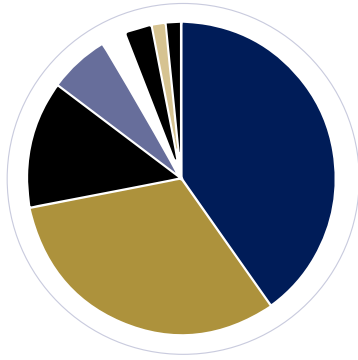
- 200 Blessing Bags for our Housing services through St. Patrick Center
- 200 Hygiene Kits for Family & Children Support services through Marygrove
- 200 Welcome Bags for the Mental Health & Wellness services through Queen of Peace Center and Saint Martha’s
- 500+ Holiday Cards for Senior Care Residents at Cardinal Ritter Senior Services

It was a great way for Catholic Charities to be out in the community and especially reaching out to the young people coming from across the country. It is yet another way Catholic Charities wants to be an essential presence in the Archdiocesan mission!



Ministry Revenues and Expenses

Fiscal year ended June 30, 2023

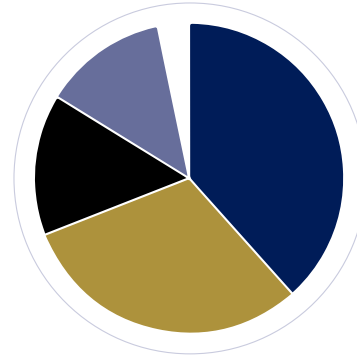


Ministry-wide Revenues

- 41% Government
- 32% Program Service Fees and Private Contracts
- 13% Contributions and Bequests
- 6% Releases from Temporarily Restricted
- 2% Other Income
- 3% United Way
- 2% Annual Catholic Appeal
- 3% Investment Income (Loss)

Total: \$101,527,658

Total Year Prior: \$103,387,042



Ministry-wide Expenses

- 38% Senior Adult Programs
- 32% Family and Community Programs
- 15% Children's Programs
- 13% Management and General
- 3% Fundraising

Total: \$103,065,124

Total Year Prior: \$101,298,859

Financial Snapshot

- Net assets of our Ministry totaled \$47,362,938 at June 30, 2023, compared to \$48,906,250 a year earlier.
- Revenue declined 1.8% from prior year primarily due to lower income from government relief funding (\$3.0 million), contributions and bequests (\$3.5 million), and other income (mainly from 2022 loan forgiveness which did not come to pass in 2023) (\$3.2 million), partially offset by increases in investment income driven by favorable market conditions (\$6.3 million) and program service fees and private contracts (\$0.8 million).
- Proportions of revenue sources remained reasonably consistent with prior year. The categories with the most significant changes, driven largely by the impacts of the variances noted above, were investment income (3% versus -3%), contributions and bequests (13% versus 16%), other income (2% versus 5%), government (40% versus 42%), and program service fees and private contracts (32% versus 31%).
- Operating expenses increased 1.7% from prior year primarily due to the impacts of high inflation and a tight labor market which drove increases in internal and third-party personnel and other costs. This was offset by a reduction in Pension expense due to market conditions in the current year versus the expense increase realized in the prior year.
- Consistent with prior year, 84% of expenses were dedicated to programs serving the community, with fundraising and management and general costs representing 3% and 13%, respectively. A variety of factors, including the tight labor market, resulted in the following changes in proportions of costs compared to prior year – senior adult program costs (38% versus 40%), family and community program costs (31% versus 28%), and children's program costs (15% versus 17%).



Mission

To bring the healing, help, and hope of Jesus Christ to those in need with a compassionate, caring presence.

Vision

Catholic Charities of the Archdiocese of St. Louis will be a premier leader in community renewal and a visible catalyst for social outreach by connecting with people, parishes, and ministries committed to a meaningful communion of care to those in need across every square mile of the Archdiocese of St. Louis.



Values

Dignity

We love and serve each person as made in the image of God.

Hospitality

We are to be and see Christ in those we serve.

Service

We always welcome joyfully any opportunity to be in the presence of Christ.

Excellence

We give our very best to people God calls us to encounter.

Compassion

We see to journey with our sisters and brothers.

Joy

We bring a fullness for life and look to bring healing, help, and hope in every encounter.

Cardinal Ritter Senior Services

Age-related memory loss is on the rise. According to the Alzheimer's Association, 6 million Americans live with Alzheimer's (just one form of memory loss) and that number is expected to more than double by 2050. Currently, memory diseases cost our country \$345 billion, and are expected to reach \$1 trillion in the next 25 years.

Cardinal Ritter Senior Services has five memory care neighborhoods with enhanced environments that protect our residents' well-being. They contain more caregivers per individual, as well as inviting programs to keep residents safe and engaged, and our level of care gives family members much-needed peace of mind. Our caregivers are specially trained, which empowers them to professionally interact with those living



with brain changes while offering relationships that are authentic, empowering, compassionate, and curious.



PURPOSE STATEMENT

Promoting the dignity of human life within a variety of high-quality, specialized communities, while providing older adults the programs and community-based services to fully live their best lives.



As a ministry of Catholic Charities of the Archdiocese of St. Louis, we are proud to offer older adults the programs and community-based services to live their best lives. Through our mission, we promote the dignity of human life based on the healing, help, and hope of Jesus Christ and I am fulfilled each day to see our coworkers impart this spirit of service to our residents and clients."

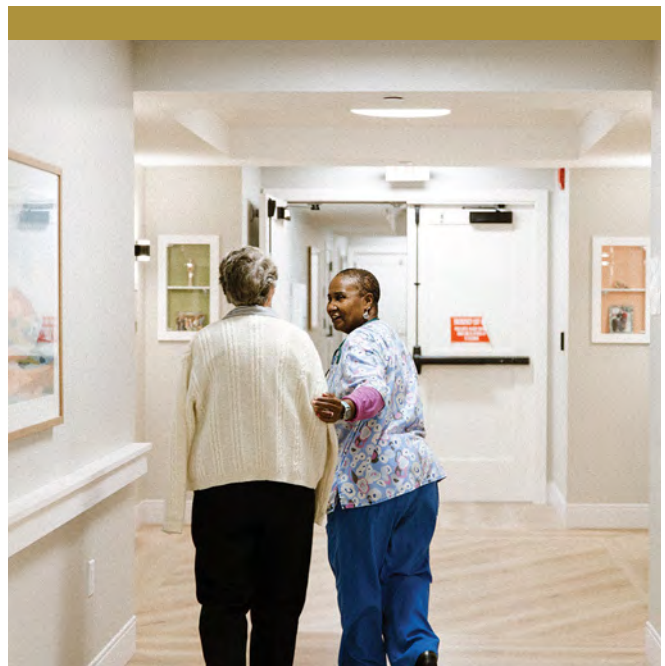
– Chris Baechle, Executive Director/CEO, Cardinal Ritter Senior Services

Client Success Story

Jackie—Relatives Acting as Parents Program

Cardinal Ritter Senior Services helps older adults in a variety of living situations. One of our programs, Relatives Acting as Parents Program (RAPP), helps any relative who is the primary caretaker of a younger relative. One such client is Jackie, who was finally enjoying retirement after a lifetime of working, but needed to provide care for her great-grandson Jeremiah, when he was in the fourth grade. She struggled—financially and emotionally—until someone at Jeremiah’s school suggested she seek help from us. “I live on a very fixed income, and it doesn’t go up, but everything else—the cost of living—does go up,” Jackie said. But with the help of Cardinal Ritter Senior Services, she was able to get help. “They helped me tremendously, and not just financially,” she said. “I’ve gotten food and legal assistance . . . if it was within their power, those needs were met.”

Jackie said her stress level “dropped to a tremendous low” because of the assistance we were able to provide her. And that made her a better parent. Jackie was able to see Jeremiah through high school graduation and they still have a close relationship today. She is now enjoying the retirement she was supposed to have.



Volunteer Numbers

Cardinal Ritter Senior Services	73
Human Resources	1
Mother of Perpetual Help	32
Mary, Queen and Mother Center	109
Our Lady of Life	5
St. Elizabeth Hall	12
Total	232

Contact

Cardinal Ritter Senior Services
7601 Watson Road
St. Louis, MO 63119
314.961.8000
cardinalritterseniorservices.org



Good Shepherd Children & Family Services

Good Shepherd is dedicated to strengthening, healing, and preserving families. It's work we have been doing for nearly 200 years, constantly evolving to meet the demands of the community. This can mean helping a young mother build a stable life for her baby, working with adoptive parents who want to create a family, finding a safe place for a child in foster care, or supporting a family who wants to provide a temporary, loving home. It is helping a family heal from traumas caused by poverty, addiction, or other societal factors.

Adoption Services: We represent every side of the adoption triad – children of all ages, birth parents, and adoptive families – by providing compassionate counseling and assistance as they explore their options and make life-changing, life-giving decisions.

Foster Care: Good Shepherd walks beside children in foster care and their families as they take the time they need to strengthen and stabilize. We also support foster parents who open their homes to children who need a safe place to stay during a difficult time.

Maternity Shelter: Good Shepherd's Maternity Shelter offers pregnant and parenting mothers and their babies a safe place to lay their heads. Our 24-hour direct care staff provides support and treatment services, focusing on skills that enable mothers to transition into stable housing and independence.



Volunteer Numbers

79 Unique Volunteers

237 Total Volunteer Hours

Pregnancy and Parenting Support: Good Shepherd believes that strengthening families is the most effective way to support children. We partner with other nonprofits to provide community-based services like pregnancy testing, crisis counseling, and connections to resources. Additionally, we visit families in their homes to provide services like parenting training, counseling, financial assistance, and baby care items.



The work we do at Good Shepherd is a calling, one that is shared by our staff, board, partners, churches, and donors. We are dedicated to facing the most challenging child welfare environment of our time by expanding our services where there is a need and sharing our expertise where it can make the biggest difference. We achieved impressive outcomes this past year because we have been blessed with the resources and passion needed to keep fighting for children and families. I'm thankful for those who join us on this mission!"

— Kathy Fowler, Executive Director/CEO, Good Shepherd Children & Family Services

Client Success Story

Armonie–Good Shepherd’s Maternity Shelter

Armonie had a job and was going to school when she found out she was pregnant in 11th grade. She was excited because she had worked in daycare and felt prepared, but her responsibilities became overwhelming and she left school just shy of graduation. She did everything she could to provide the best life for her daughter, Amelia—moving between relatives’ homes and taking jobs that would fit the childcare that was available.

“Amelia was two when I found out I was pregnant with Ja’Monie. He was in the NICU for about three weeks, and I was back and forth between the hospital, my mom’s house, my grandmother’s house, and my sister’s house. I wasn’t working when I brought him home, and it felt like no one wanted me around because they had their own lives and families. I knew it was time for me to find a stable place for us. I realized I needed help, and there was only one person I could go to, and that was God. I prayed and I cried a couple of nights. Then a friend told me about Good Shepherd. It was hard for me to come here because I never saw myself in this situation, but God told me it was going to be ok. He led me here. They didn’t look at me differently because I was a young mom with two kids. They accepted us. I’ll be moving to my own apartment in a few weeks. I’ve got a job I love, my kids are in daycare, I have a car, and things are getting better. It’s just the beginning. I’m so ready for life. I’m ready to look back and say, ‘I did it. Look how far I came with the help of Good Shepherd.’”

PURPOSE STATEMENT

Connecting children with families and keeping families connected by providing pregnancy and parenting support, foster care programs, and adoption services.



Contact

1340 Partridge Avenue
St. Louis, MO 63130
314.854.5700
goodshepinfo@gsstl.org
goodshepherdstl.org



LAMP

Language Access Multicultural People (LAMP) is a Language Services Provider (LSP) founded approximately in 1996 with a mission to empower people and build relationships by bridging cultural and linguistic divides through the provision of interpreting, translation, and related educational services. LAMP is proud to have a diverse team of 317+ local interpreters, fluent in over 73 languages. We provide valuable language assistance to the St. Louis Community, rural areas of Missouri, and across the continental USA through phone and video services.

LAMP provides a range of services, including in-person interpreting, over the phone interpreting, video remote interpreting (VRI), written translation, and education & training.

In-Person Interpreting: Collectively, LAMP in-person interpreters are fluent in over 73 different languages. In-person communication is rated significantly higher by providers and interpreters.

Over-the-Phone Interpreting: Our network of professional over-the-phone (OPI) interpreters are available on demand 24/7/365 covering over 150 languages so you receive the language access assistance you need when and where you need it most.

Video Remote Interpreting (VRI): An affordable, convenient language services option. It serves as a great solution for areas where in-person interpreter services are limited or for emergency assignments.



Document Translation: Whether you want to reach out to a new community, improve patient outcomes, or increase client satisfaction, document translation services can help you achieve your goals. It provides meaningful language access to limited English Proficient clients.

Language & Culture Education Hub: We wanted to educate both providers and the next generation of interpreters to help users develop deeper cultural understanding as well as linguistic skills. Notably, LAMP is the sole agency in St. Louis licensed to provide Bridging the Gap training.



The sentiment of Love, in its purest form, knows no boundaries of language, culture, race, or any other societal constructs. It's a force that connects us all on a fundamental level of our shared humanity. Love is expressed and understood differently through cultures, societies, and personal experiences. Being aware of these nuances can favor a deeper connection and appreciation of the diverse ways the language of love is expressed around the world."

— Eduardo Vera, Executive Director, LAMP

Client Success Story

Bridging Language Gaps for Inclusive Education

We had the privilege of supporting a local school in creating a more linguistically inclusive environment for its students and families. Our client, a dedicated educational institution, recognized the need to enhance communication with its diverse student body and their families.

Navigating language barriers in an educational setting can be a significant challenge. The school reached out to us for assistance in establishing clear lines of communication with non-English-speaking families, fostering a more inclusive and supportive atmosphere.

We were deployed to facilitate communication during parent-teacher conferences, school events, and other crucial interactions.

The impact was immediate and profound. Parents felt more empowered to actively engage in their child's education, and teachers could communicate effectively about academic progress and school activities.

From the Principal:

“The interpreter services provided by LAMP have transformed our school community. We now see a greater level of collaboration between teachers and parents, fostering a more inclusive and supportive educational environment.”

PURPOSE STATEMENT

Empowering people and building relationships by bridging cultural and linguistic divides through the provision of interpreting, translation, and related educational services.

From a Parent:

“I appreciate the efforts the school has made to ensure that language is not a barrier. Thanks to the interpreter I feel more connected to my child's education and can actively participate in school events.”

At LAMP, we take pride in being the bridge that connects communities. This success story exemplifies our commitment to making communication accessible for all, ultimately fostering stronger partnerships between organizations and the diverse individuals they serve.



Contact

LAMP Interpreters
8050 Watson Rd
St. Louis, MO 63119
877.240.6398
lampinterpreters.org



Marygrove

For 175 years, Marygrove has been a place where children and youth have found hope and healing. Marygrove provides treatment and support to young people through a variety of programming.

Therapeutic Residential Treatment

One of the largest single-site residential treatment programs in the region, providing a safe and stable home for youth ages 10–18 while they receive support and therapy to heal from emotional and behavioral issues.

- **Marygrove School and Educational Services** provides on-campus educational support and therapy to youth who have been diagnosed with mental illnesses and require treatment to thrive in a traditional classroom setting.
- **Recreation Therapy** is an essential part of the program of treatment since some children cannot often express their inner thoughts and feelings through normal conversational methods. Programmed activities such as art, fitness, and sports provide a vehicle for treatment and care.
- **Marygrove Clinic** is an on-campus clinic that serves the medical needs of our children and youth.

Therapeutic Foster Care

Community-based foster homes provide support to youth ages 6–21 with emotional and behavioral issues in a family setting that encourages healthy growth and development.



Transitional & Independent Living

Supervised community-based apartments and homes where young adults and teen parents, ages 17–20, live in group homes or independently, and receive support with academic, educational, and occupational goals, and parenting skills that move them toward self-sufficiency with thriving lives in the community.



The past few years have heightened the need for the services Marygrove provides. The staff and supporters of this essential ministry demonstrate dedication and an inspiring passion for this work. I am looking forward to beautiful things from Marygrove in the years ahead.”

—Kathy Fowler, Executive Director/CEO, Marygrove

Client Success Story

When Glen came to Marygrove at the age of 10, he was a hard-headed, defiant boy who often spent more time suspended than in school. He lived in our Residential Program for three years before moving into one of our foster homes. When Marygrove's co-worker, Michelle, accepted a position as a foster parent for our Sycamore House, she learned that Glen would be her first resident. After spending one-on-one time together, Michelle quickly discovered an entirely different boy from the one she previously knew. Over the next few years, Glen became more attached to Michelle, and they formed an inseparable bond. He had a huge heart and a smile that could brighten anyone's day. Having a stable home life and a foster mom he could trust, Glen began to turn his life around. He was getting into fewer fights, was suspended less, and his grades improved drastically. He also found a love for sports, which was the biggest turning point in his life. Michelle had never been prouder when the school nurse told her "You must be a miracle worker because in my 55 years, I have never seen someone make a complete turnaround like Glen." When Glen turned 17, they discussed moving him into an independent living program. But Michelle couldn't stand the thought of losing him. So, when adoption was mentioned as a possibility, that's exactly what she did, and Glen became her legal son! Glen went on to graduate college and is a successful businessman, currently living in Texas. This past September, Glen got word that his

cousin's food truck was going to be at Marygrove's Golf Tournament. He jumped at the opportunity and flew in to help, and even covered all the food costs! Michelle beams when she speaks about Glen, stating "He is the best thing that has ever happened to me. I can't imagine him not being in my life or not being my son."



PURPOSE STATEMENT

Providing a safe home, compassionate care, and high-quality mental health services to children and youth who have experienced significant trauma, to restore their childhood and equip them for productive adulthood.

Volunteer Numbers

197 Unique Volunteers

2063 Total Volunteer Hours

Contact

Marygrove
2705 Mullanphy Lane
Florissant, MO 63031
314.830.6201
marygrovechildren.org



Queen of Peace Center

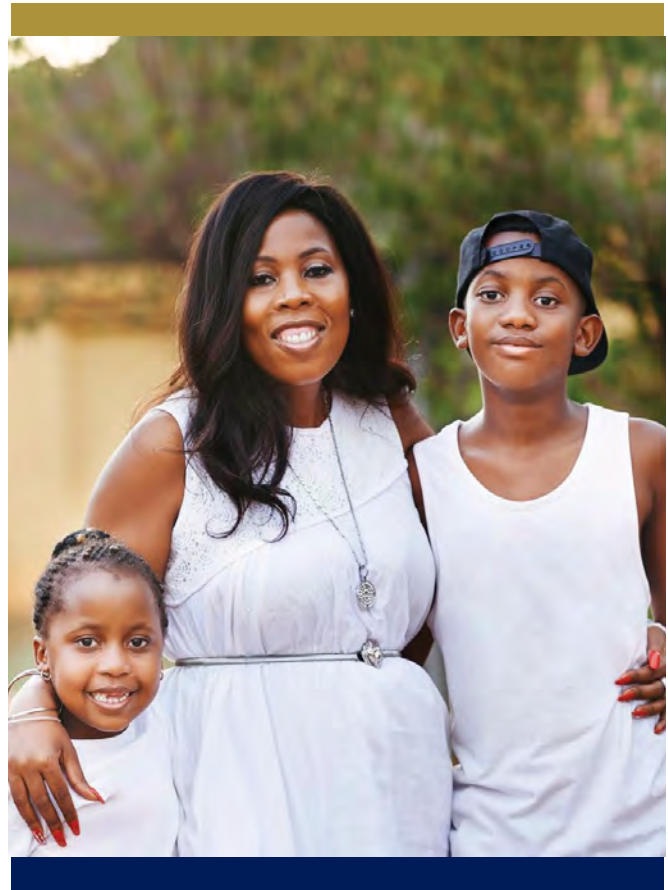
Our Nurturing Networks Family and Children's Program provides a variety of clinical services to clients and their children, family members, significant others, or any significant person in a client's life who has been affected by the client's substance use disorder, co-occurring disorder, and/or trauma.

The family program aims to address women's multiple treatment needs by integrating family services, children's services, and parenting education as crucial aspects of behavioral health treatment.

Program services include:

- Family therapy
- Child therapy
- Play therapy
- Children's case management
- Parent education
- Art therapy
- Individual and group co-dependency counseling

The Nurturing Networks Therapeutic Childcare Center provides various services to children who have a mother actively engaged in treatment and fall between 6 weeks–5 years old. This early intervention and prevention program offers social-emotional support in a therapeutic classroom setting. Our teachers are there every step of the way to provide a safe and caring environment for the children to learn and grow.



Volunteer Numbers

68 Unique Volunteers

440 Total Volunteer Hours



Each day, we see these women at Queen of Peace Center struggling to break the habits of substance use and put their families back together. Their families inspire them to work through their pain and we are here to help along the way.”

– Sharon Spruell, Executive Director/CEO, Queen of Peace Center

Client Success Story

Stephanie—Queen of Peace Center

Stephanie tells us she had a very normal upbringing with wonderful, supportive parents. But, at 23, Stephanie found herself in an abusive relationship, a substance user, with no job, and pregnant. She was living at home when she went into labor and she remembers having to tell her mother that she was not going to be able to bring her daughter, Hollie, home from the hospital because she had been using throughout her pregnancy. Stephanie thought that was one of the hardest things she had ever done until she had to give up her baby and fortunately for Stephanie, her parents took her to Queen of Peace Center, a program that helps families with substance use and takes care of the whole family. Stephanie worked hard, scared beyond belief, but remembered her daughter was being taken care of by a foster family, and Stephanie needed to get better to be with her daughter. Stephanie says it best herself. “While I was there, I received some of the best counseling and groups that I could have ever asked for. It all seemed a bit overwhelming, but I knew it had to be done if I wanted to see my little girl again and stay on the right track. Now, Stephanie and Hollie are both on the right track, together. Stephanie calls Hollie a “gift from God” and thanks the Queen of Peace Center for all their help in reuniting her family.



PURPOSE STATEMENT

Providing family-centered care for women with substance-use disorders, their families, and at-risk youth through treatment, prevention and education, and housing.

Contact

325 N. Newstead Ave.
St. Louis, MO 63108
314.531.0511
qopcstl.org



Saint Louis Counseling

Our School Partnership Program (SPP) therapists have assisted students from kindergarten through 12th grade who attend parochial, private, and public schools. Our program is based on the philosophy that the school, family, and community are partners in educating our children, strengthening families, and building stronger, safer communities. 130+ schools use our partnership program and 3000 students are served annually through the program.

Program services include:

- **Embedded school-based counseling services** schools request the services of a counselor for one or more days a week.
- **Outreach school-based counseling services** schools request the services of a counselor on an as-needed basis.
- **Crisis response services** schools request crisis intervention/grief-related counseling services in response to a trauma affecting the school community.
- **Consultative services** schools request a counselor to consult with staff regarding students or general school-related issues. This may be in the form of a care team, other wrap-around services, or on an as-needed basis.
- **Prevention services** schools request educational programs for students, faculty, and/or parents on a variety of topics.



During these challenging times, to be able to provide a reliable, and easily accessible avenue for support like HOPE, our Chatbot to our amazing therapist who work with our school program and others who provide support for our many services, it is easy to see the value Saint Louis Counseling provides to the clients across the entire Archdiocese, providing the healing, help, and hope for the future.”

— Sharon Spruell, Executive Director/CEO, Saint Louis Counseling

Client Success Story

Stephanie–Saint Louis Counseling

It only takes a split second for your world to turn upside down, literally for Stephanie who sought the healing services of a ministry of Catholic Charities, Saint Louis Counseling, after a serious accident. In the blink of an eye, as her car was flung into the air and rolled, Stephanie landed with very few physical injuries but needed the special counseling of Saint Louis Counseling to bridge the gap between her despair and her recovery. As Stephanie says, “My counselor’s unwavering support became the cornerstone of my healing process. She didn’t just provide therapy, she offered understanding, kindness, and a safe space to express my emotions.” Saint Louis Counseling is a place where you can find the healing, help, and hope of Jesus Christ.

Although Stephanie needed the full services of our ministry and we were happy to be available for her healing, we also have a service for those who might just need a little aid in managing stress and finding balance in their lives. **HOPE** is a text-based chatbot at ccstl.org. Sometimes we just need a little help, and sometimes we need more. To reach HOPE text “Hi” to +1 (202)949-7249.

Catholic Charities is here to provide a communion of care for those in need in the entire Archdiocese.



Volunteer Numbers

16 Unique Volunteers

1796 Total Volunteer Hours

PURPOSE STATEMENT

Supporting healing and improved mental health for individuals and families of all backgrounds through professional counseling and psychiatry services.

Contact

5 Premier Dr.
Suite 200
Fenton MO 63026
314.544.3800
saintlouiscounseling.org



Saint Martha's

Shelter

67 women
and **77** children =
144 residents

2039 crisis calls



Community Education Awareness

Youth **67** talks/**1,278** people
Adults **72** talks/**171,675** people

Total: **99** talks
172,953 people



Drop-In

In-person services

194 In-person visits were provided

75 NEW (unduplicated) women
seeking services

276 Hours spent with in-person visits

Phone services

736 Total phone calls

283 Total hours on calls

How to Help

(services to friends and family)

8 Individuals who came to the center seeking help were seeking help for a loved one.



Saint Martha's in more than the four walls of the shelter or the drop-in center. It is a belief that if Jesus encountered a woman who had been abused, he would comfort and protect her. He would open his door to her and say, 'Let me walk with you.'

— Jessica Woolbright, Executive Director, Saint Martha's

Client Success Story

Jane–Women’s Shelter Program

Jane came to Saint Martha’s in fear for her life. Her partner had physically abused her in the presence of others, a red flag indicating his potential lethality and therefore her increased risk. During about a month’s time, staff at the drop-in center provided emotional support and safety planning, resulting in Jane deciding to secure and hide copies of important documents, reprogram her house alarm, install the front door camera provided by Saint Martha’s, and explore the option of applying for an Order of Protection. However, Jane’s safety plan changed when her abuser showed up at her house unexpectedly. It became clear to her and the staff at the drop-in center that while she had made important steps, she now needed to relocate out of her home. Working together with the drop-in center and the shelter, Jane quickly, quietly, and safely entered the shelter. During her time in the shelter, she continued to implement important steps to further her safety and healing, including filing for and receiving an Order of Protection. After just a few weeks in the shelter, Jane expressed that she was emotionally and physically in a better, safer place and was ready to live on her own. She departed the shelter and continues to stay in touch with Saint Martha’s.

PURPOSE STATEMENT

Serving women and children impacted by domestic violence by providing shelter and resources.



Volunteer Numbers

37 hours of direct volunteering

520.5 hours of indirect volunteering

557.5 hours total volunteer hours

28 volunteers

Contact

Saint Martha’s Shelter (24/7)

P.O. Box 4950
St. Louis, MO 63108
314.533.1313

Saint Martha’s Drop-In Center

4733 Mattis Road
St. Louis MO 63128
314.487.2062
saintmarthas.org



St. Francis Community Services



St. Francis Community Services, as an extension of Catholic Charities, embodies the mission of bringing healing, help, and hope of Jesus Christ to those in need through a compassionate and caring presence. Our purpose is to walk alongside our vulnerable neighbors, creating opportunities, fostering resilience, and advocating for justice.

Our commitment remains unwavering in strengthening communities by supporting and empowering families, regardless of their composition. We serve a diverse range of families, including those in St. Louis City and North St. Louis County who face poverty and seek ways out through programs like Pathways to Progress. We also serve our Latino and Haitian neighbors through various immigrant services including Youth programs, Adult education workshops, Mental Health support, Legal Aid, and others. We support Vietnamese seniors' health and well-being as well as work with veterans on issues impacting their lives which many times is related to homelessness. Despite their different backgrounds, a common thread unites them: the need for support to navigate complex situations and improve their lives.

Looking ahead, SFCS is dedicated to enhancing family well-being, extending its impact to the broader community. We have opportunities to serve new people in new ways and expand our geographical reach by leveraging our expertise in long-term case management, cultural competency, community activation, and legal services, which prepares us to meet the evolving needs of our community.”

— John Schulte, Executive Director, St. Francis Community Services

St. Francis Community Services operates a variety of programs. One of which is the Catholic Legal Assistance Ministry (CLAM). CLAM focuses on helping underserved populations through family and guardianship law, veterans advocacy, immigration law, housing crisis cases, and municipal court cases. We serve people that other organizations will not. Our clients are at 150% of the poverty level or less (e.g. a family of 4 that makes less than \$39,000) and most of them have no money to pay for legal representation.

Many of the people we serve are fighting against obstacles that most of us cannot even imagine. The clients served by our talented, expert attorneys and specialized support staff are seeking safety, justice, and protection through the court system, so that they may live a stable and healthy life. One couple came to us after their daughter passed away, asking SFCS to help them obtain guardianship of their grandchildren. Our attorney walked with the family through that dark period in their life, ensuring

PURPOSE STATEMENT

Helping individuals and families become sustainable by working with them over time through mentorship and training to develop the tools to overcome barriers to success and to foster the skills necessary for a more secure and satisfying future.

that the children could stay out of foster care and remain at home with their grandparents, where they belonged.

Our Legal Assistance Ministry has provided free legal aid in the St. Louis area for more than 35 years. Annually, the program handles about 1,300 cases. We are also inexpressibly grateful to our team of volunteer attorneys who collaborate with us to represent clients, expanding legal services to our neighbors in need.

Client Success Story

Angela- Wrap-around Case Management

“Angela” and her Pathways to Progress case manager identified that one of her biggest barriers to a better job was outstanding warrants for minor traffic offenses, which were preventing her from driving. She was limited to jobs that she could access using public transportation, which took hours out of every day and made it harder for her to work on her other goals.



An attorney on staff at St. Francis Community Services helped Angela resolve numerous municipal court matters so she could finally obtain legal driving privileges.

Our attorney also discovered that her unscrupulous landlord had obtained an unfair eviction judgment against her. The attorney took her case to court,

where the judgment was overturned. The judge agreed to seal Angela’s record. Now, Angela can rent a better apartment in a safer neighborhood for her and her children without future landlords seeing an eviction on her record.

Volunteer Numbers

	# of	Hours
CLAM	18	3,526
Immigration Services	80	1,550
Pathways	0	0
Board	21	891.75
Total	119	5,968

Value (\$343 - Attorney, \$28 Other Vol/Intern)

CLAM ProBono value of volunteers = \$1,140,125

Partnerships



Contact

St. Francis Community Services
 P.O. Box 952393
 St. Louis, MO 63195
 314.932.3300
 sfcs@ccstl.org
 sfcsstl.org

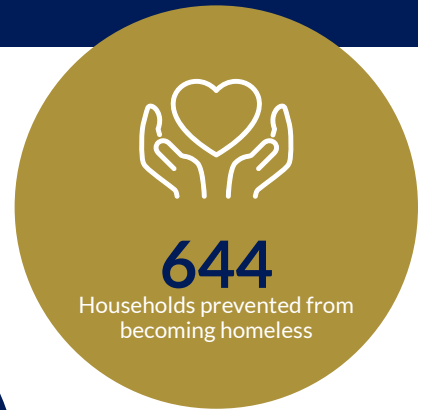


St. Patrick Center

In December 2023, St. Patrick Center expanded its workforce development program to the Central Café at Central Library in downtown St. Louis. Sacred Grounds Café is not just serving coffee, they are brewing change and empowering individuals to build a better tomorrow. Library customers and coffee lovers can enjoy handcrafted drinks made by St. Patrick Center clients enrolled in the barista training program. Barista training, a St. Patrick Center workforce development program, teaches clients new skills and on-the-job training in a coffee shop setting. Visit Sacred Grounds Café at Central Café inside the Central Library in downtown St. Louis (1301 Olive St, St. Louis, MO 63103).

PURPOSE STATEMENT

Transforming lives and working to create a community where everyone has access to sustainable housing, employment, and healthcare.



Fiscal Year 2023 was a significant year for St. Patrick Center, as we commemorated its 40th year of bringing the healing, help, and hope of Jesus Christ with a compassionate, caring presence to those experiencing homelessness or at risk of homelessness. Last year, we served over 4,200 clients in various ways to ensure access to sustainable housing, employment, and healthcare. 479 families found housing, and 644 families stayed housed. We served over 740 veterans and their families and helped 155 clients secure employment. The support of our staff, our funders, and our volunteers, helped shape this reality in our community, empowering thousands of individuals, and families throughout the year.”

— Amanda Laumeier, Executive Director, St. Patrick Center

Client Success Story

St. Patrick Center's Women's Night Program assists women experiencing homelessness, helping them to overcome barriers to permanent housing. Women's Night Program provides case management, individual counseling, treatment planning, and emergency shelter for up to 30 women who have behavioral health issues and/or substance abuse issues. These women are connected with various agency programs as well as community partners. Susan was once a client in the Women's Night Program, coming to St. Patrick Center after a long, cold month of living on the street. She was forced out of her uncle's home—her escape from an abusive relationship—after her uncle passed away and his son (Susan's nephew) took possession of the home. He promptly forced Susan out, leaving her on the street with few belongings to her name. Outside in the cold and constantly fearing for her life, Susan fell ill and ended up in the hospital for a week. Once out of the hospital and back on the street, Susan was taken to a women's shelter where she spent a short time before joining the Women's Night Program at St. Patrick Center. Susan was there for a few months before receiving a housing voucher and moving into permanent housing. "I knew when I walked into that [first] house it was mine," says Susan.

Volunteer Numbers

3,245 Volunteers (individuals & families, groups, corporate groups, and casserole volunteers)

34,411 Hours volunteered (individuals & families, board members, groups, and casserole volunteer hours)

\$1,094,269.80 Monetary value of volunteers (National Average for one hour of volunteer service is \$31.80. Source - www.independentsector.org)

Partnerships



Contact

St. Patrick Center
800 N. Tucker Blvd.
St. Louis, MO 63101
314.802.0700
stpatrickcenter.org



Catholic Charities of the Archdiocese of St. Louis

CELEBRATION

*It's a
Party!*

Save the Date

DECEMBER 6, 2024



4445 Lindell Blvd. | St. Louis, MO 63108 | 314.367.5500 | ccstl.org